

LAUNCH

X-431 GDS Sensorbox

Turn your X-431 GDS into a unique Sensor Simulator with the GDS Sensorbox! Not sure if you have a faulty sensor? Simply simulate that sensor with a known good waveform via the Sensorbox and know right away! Need a "different" or variation of a waveform? No worries, with your finger, simply hand draw your desired waveform on the GDS and click start to have the Sensorbox begin generating that very waveform.

The GDS Sensorbox also allows you to create and modify all kinds of signal parameters such as Coolant Temperature, Mass Air Flow, Throttle Position and more, saving wasted time replicating driveability issues.

With the built-in digital Multimeter function, you can display voltage, resistance and frequency and print out results via the GDS.

FEATURES & BENEFITS

Allows The Technician To Substitute Known Good Waveforms For Intermittent Components That Cannot Be Verified

Contains A Library Of Standard Reference Waveforms That Can Be Modified By The Stroke Of A Finger

Generate Hand Drawn Waveforms Right On The Screen

Sensor Simulations:

- DC Voltage
- Fixed Frequency
- Predefined Waveform
- Hand Drawn Waveform

Integrated Multimeter Test Functions:

- Voltage
- Resistance
- Frequency



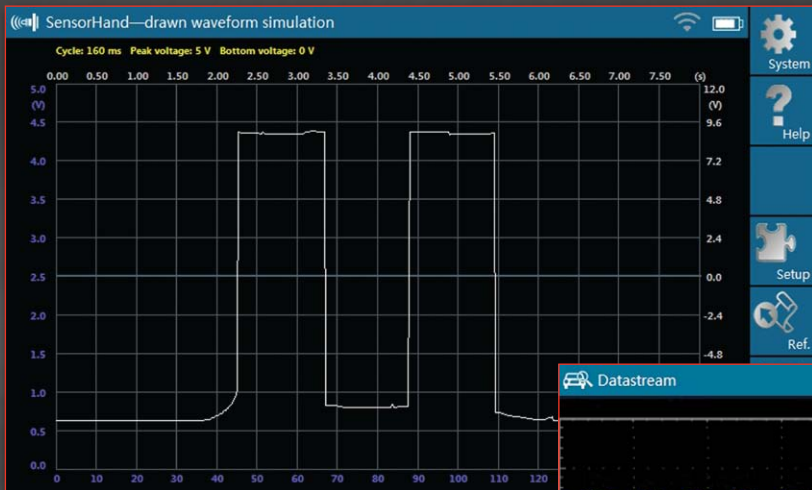
TEST CABLES & ACCESSORIES



TECHNICAL SPECIFICATIONS

SENSORBOX	PARAMETER		RANGE
	PRECISION		±5%
	AMPLITUDE RANGE		-12V ~ +12V
	MAXIMUM OUTPUT CURRENT		70mA
	PREDEFINED FREQUENCY RANGE		0~150Hz
	SQUARE WAVE SIGNAL PULSE FREQUENCY		0~15KHz

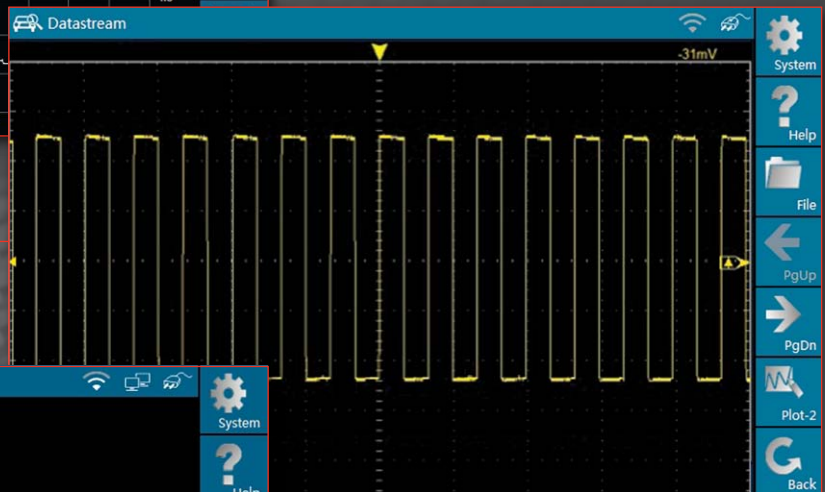
MULTIMETER	PARAMETER		RANGE
	PRECISION		±5%
	VOLTAGE TEST	TEST RANGE	DC-400V~+400V
		INPUT RESISTANCE	10Mohm
	RESISTANCE TEST	TEST RANGE	0~40Mohm
		TEST RANGE	0~25KHz
	FREQUENCY TEST	INPUT RESISTANCE	1000Gohm
		INPUT AMPLITUDE	1~12V



Sensor Hand-Drawn Waveform Simulation

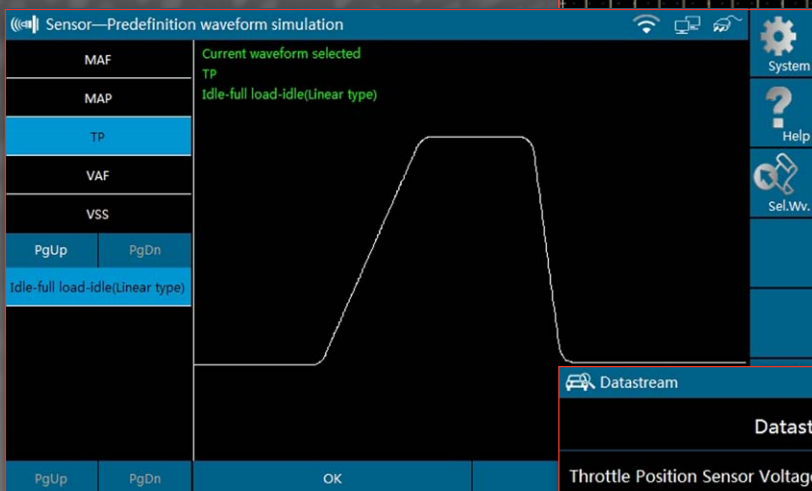
With the Launch Sensor Box you can bypass suspected bad sensors and input known good waveforms.

The Sensor Box allows you to hand draw a waveform pattern as well.



Datastream

See what you have drawn in Datastream graphs on the GDS.



Predefinition Waveform Simulation

Choose from an array of common sensors that are already drawn.

Datastream name	Value	Unit
Throttle Position Sensor Voltage	2.53	Volts
TPS Calculated Voltage	2.53	Volts
Minimum TPS	1.22	Volts
THROTTLE POSITION SENSOR PERCENT	43.88	%

Interjected data can be read in Datastream mode on the GDS.

LAUNCH

LAUNCH Tech USA Inc. • p: 1-877-528-6249 • f: 562-463-1590
1820 S. Milliken Ave. • Ontario, CA 91761
www.launchtechusa.com

LAUNCH Technology Canada • p: 1-866-977-9431 • f: 905-502-9305
5865A Coopers Ave. • Mississauga, ON Canada L4Z 1R9
www.launchtech.ca

When Ordering Your Sensorbox Please Reference:

Part # 301020574

Equipment specifications and availability are subject to change without notice.